

NOTES:

1. ALL CUPOLA AND STEEPLE UNITS ARE FABRICATED USING MINIMAL STANDING SEAMS UNLESS OTHERWISE NOTED. SEE SECTION VIEWS FOR APPROXIMATE LOCATION OF SEAMS.
2. ALL STEEL CONNECTIONS SHALL BE WELDED ALL AROUND WITH A 1/8" BEAD AS SHOWN.
3. FIBERGLASS SPECIALTIES INC. RECOMMENDS THAT THE INSTALLER USE A-325 BOLTS WHEN CONNECTING TO THE ROOF STRUCTURE BELOW.
4. DUE TO MANUFACTURING TOLERANCES AND VARIATIONS IN SITE CONDITIONS, METAL SHIMS MAY BE REQUIRED BETWEEN ADJACENT COLLARS.

DESIGN PARAMETERS

The unit described in these drawings is engineered to adequately support the loads created by a wind velocity of 120 MPH at a height of 50' above ground using ASCE 7-95 exposure category "C". An additional 2' in height was added to the base during these calculations to account for variations in roof pitch, etc.

P.O. BOX 1340  
 HENDERSON TX 75653-1340  
 903/657-6522  
 FAX# 903/657-2318

FIBERGLASS  
 SPECIALTIES  
 INCORPORATED

CUPOLA UNIT #1102  
 CROSS SECTION SHOWING  
 INTERNAL STRUCTURE

Project:

Date: 07-18-01

Revisions 11-16-05 AGT

Scale: NONE

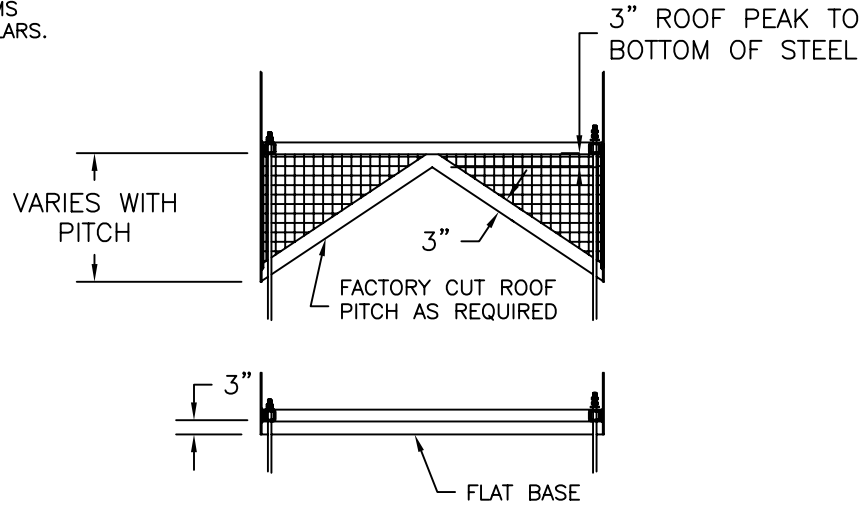
Drawing By: JC

Checked By: ALL-STL

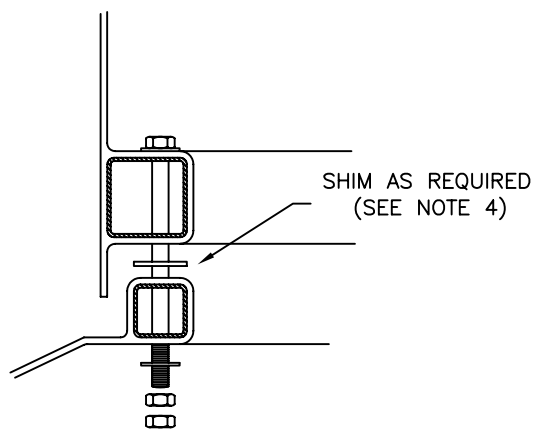
DWG # CU1102E1

Sheet #

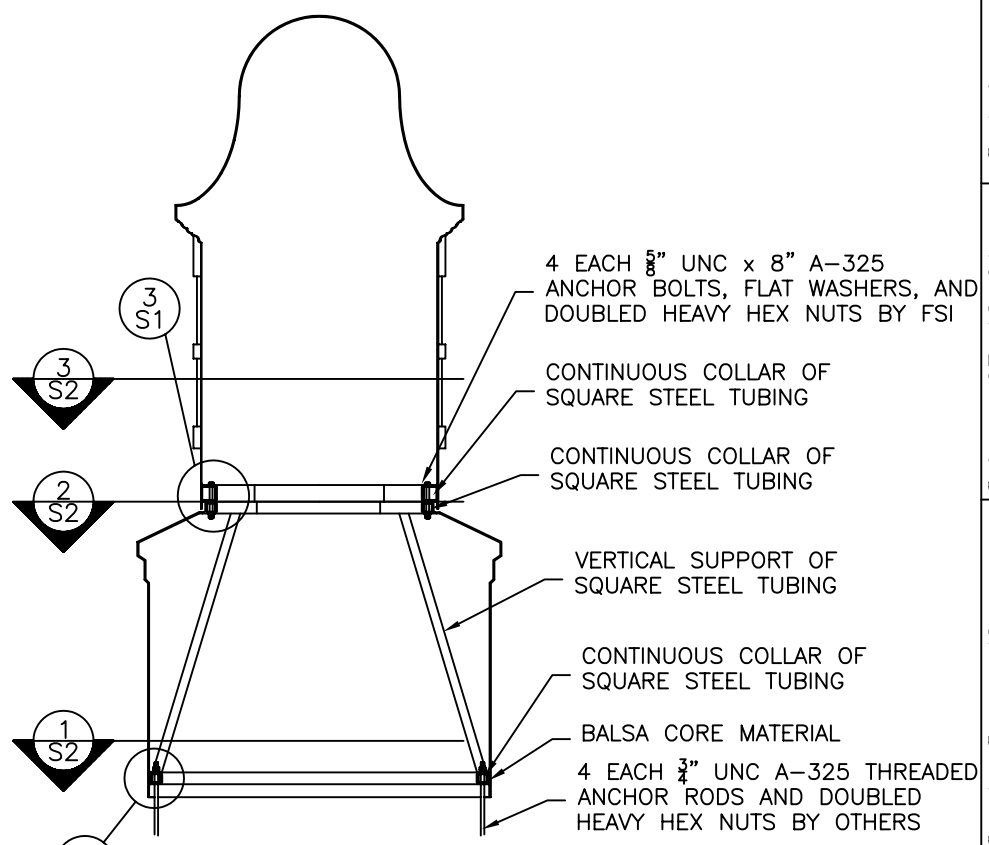
S1E  
 STRUCTURE



4 BASE DETAILS



3 BOLTING DETAIL



1 FULL SECTION



2 ANCHOR DETAIL